

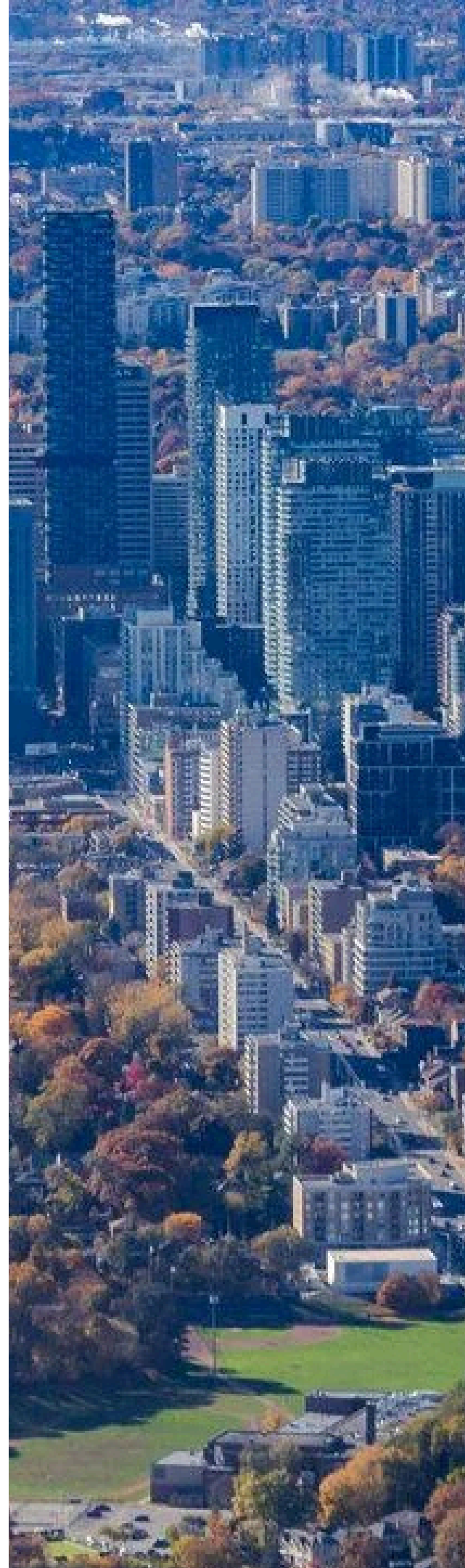


**WELCOME TO**  
**39 ROEHAMPTON AVE**  
**UNIT 4506**  
**2 BED | 2 BATH**



# MOUNT PLEASANT (WEST)

Discover this prestigious midtown Toronto neighborhood just of Mount Pleasant Cemetery with direct access to Yonge and Eglinton's shopping and dining scene. This family-friendly community attracts highly educated professionals. Enjoy world-class amenities at your doorstep, beautiful parks for kids and pets, excellent schools, and quick transit connections to downtown. Mount Pleasant offers the perfect blend of urban convenience and neighborhood charm.



# The Location:

Walking distance to:

**Toronto collegiate institute**

 4 Minutes



**Community Centre**

 10 Minutes



**Eglinton Station**

 3 Minutes



**Hodgson Middle School**

 23 Minutes



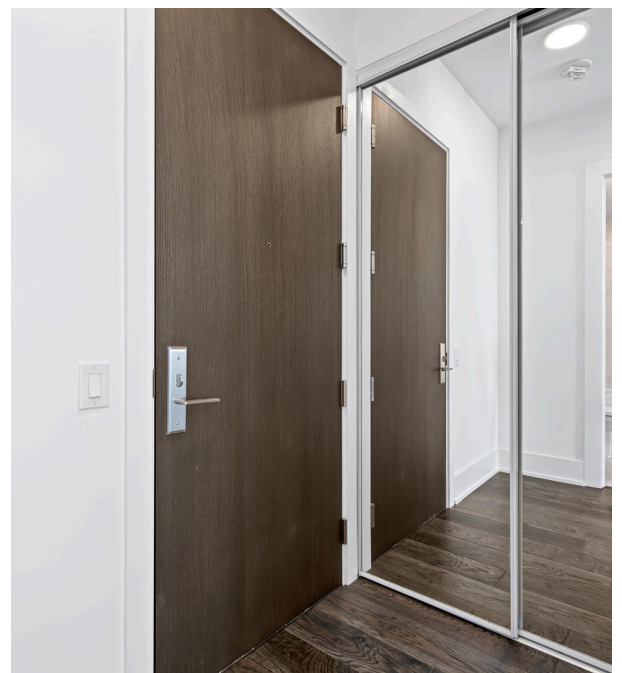




A 45th-floor corner penthouse in Midtown delivers 1,529 sq ft of living space and ~500 sq ft of private balconies with endless city views. It features hundreds of thousands in upgrades.

## Overview:

- + Brand new condo apartment
- + 2 Bed, 2 Bath
- + Heated primary floors
- + 500 sqft Balcony
- + Luxury flooring
- + Miele appliances
- + 10-foot ceilings
- + Full Amenities Condo
- + Primary suite with a 5-piece ensuite







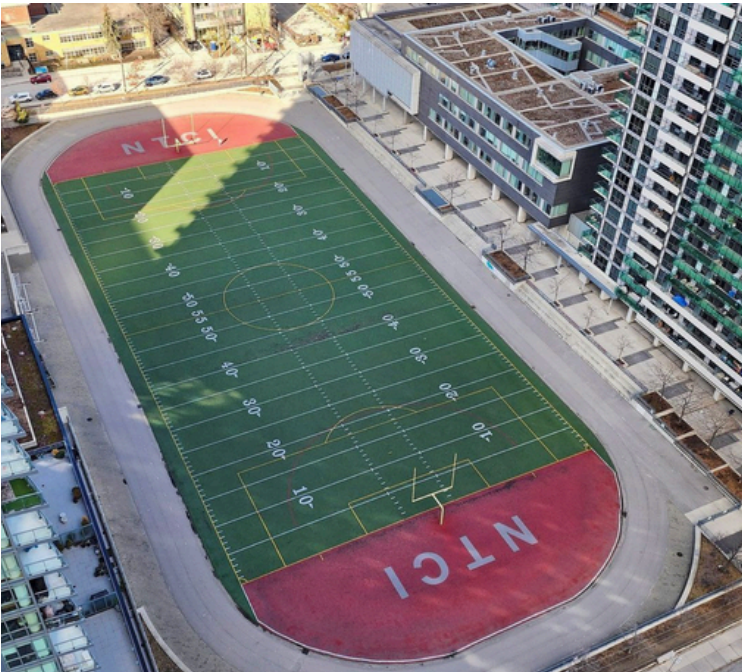














# 39 ROEHAMPTON AVE UNIT 4506

*Schedule a viewing today!*

